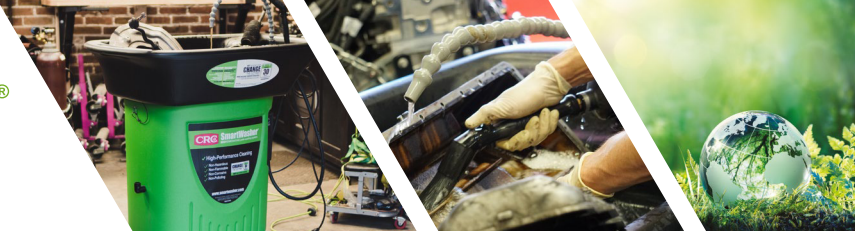




SmartWasher®
BIOREMEDIATING parts washing system



SW-23 MOBILE PARTS/BRAKE WASHER

 **D3F0 NUMBER**

 **LEGACY NUMBER**



I004858
I4161



Solutions to Keep You Moving™

f t y o i n • 800-556-5074 • crcindustries.com/smartwasher

CRC Industries, Inc. is a global leader in the production of specialty products and formulations for maintenance, repair and operational professionals and do-it-yourselfers serving the automotive, industrial, electrical, marine, heavy truck, hardware and aviation markets. CRC trademarked brands include: CRC®, Brakleen®, Evapo-Rust®, K&W®, Sta-Lube®, SmartWasher®, Manykate®, and Weld-Aid®

©2023 CRC Industries, Inc.



YouTube

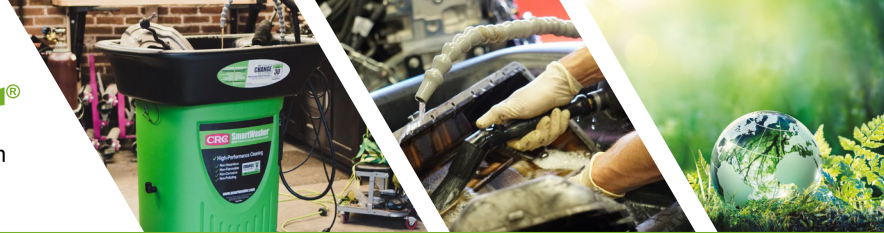
**SCAN HERE FOR
MORE INFO:**



SCAN ME

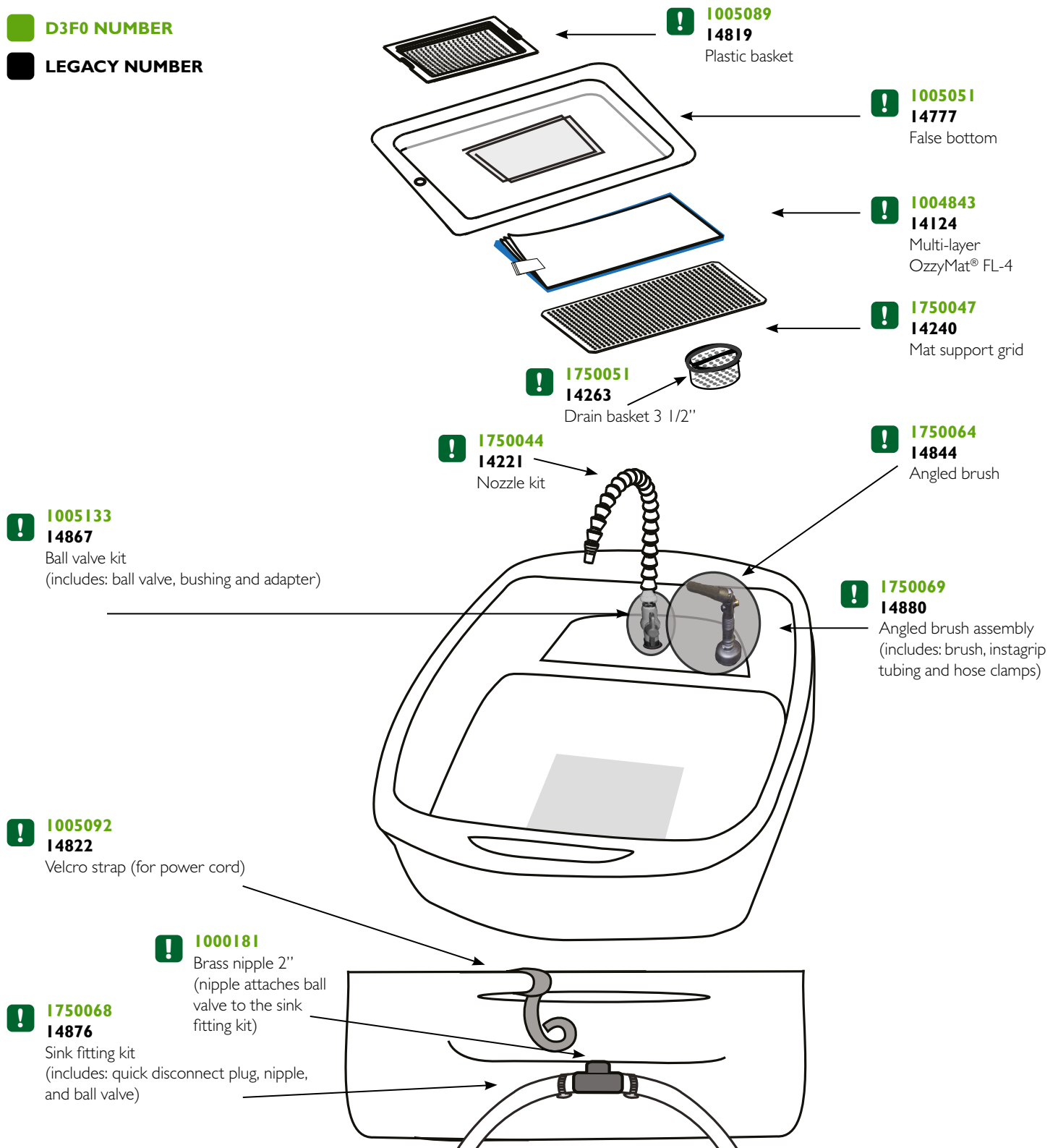


SmartWasher®
BIOREMEDIATING parts washing system



SW-23 MOBILE PARTS/BRAKE WASHER SINK DIAGRAM

D3F0 NUMBER
LEGACY NUMBER



Solutions to Keep You Moving™

f t y i n • 800-556-5074 • crcindustries.com/smartwasher

CRC Industries, Inc. is a global leader in the production of specialty products and formulations for maintenance, repair and operational professionals and do-it-yourselfers serving the automotive, industrial, electrical, marine, heavy truck, hardware and aviation markets. CRC trademarked brands include: CRC®, Brakleen®, Evapo-Rust®, K&W®, Sta-Lube®, SmartWasher®, Manykate®, and Weld-Aid®

©2023 CRC Industries, Inc.



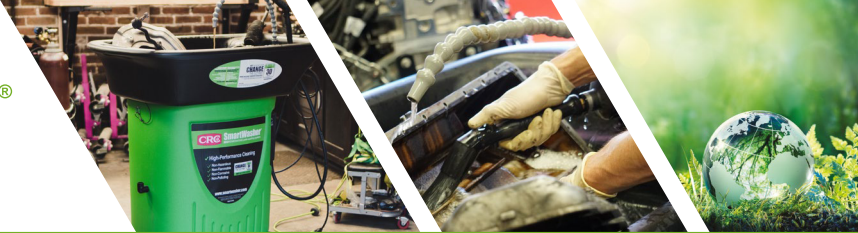
YouTube
SCAN HERE FOR
MORE INFO:



SCAN ME

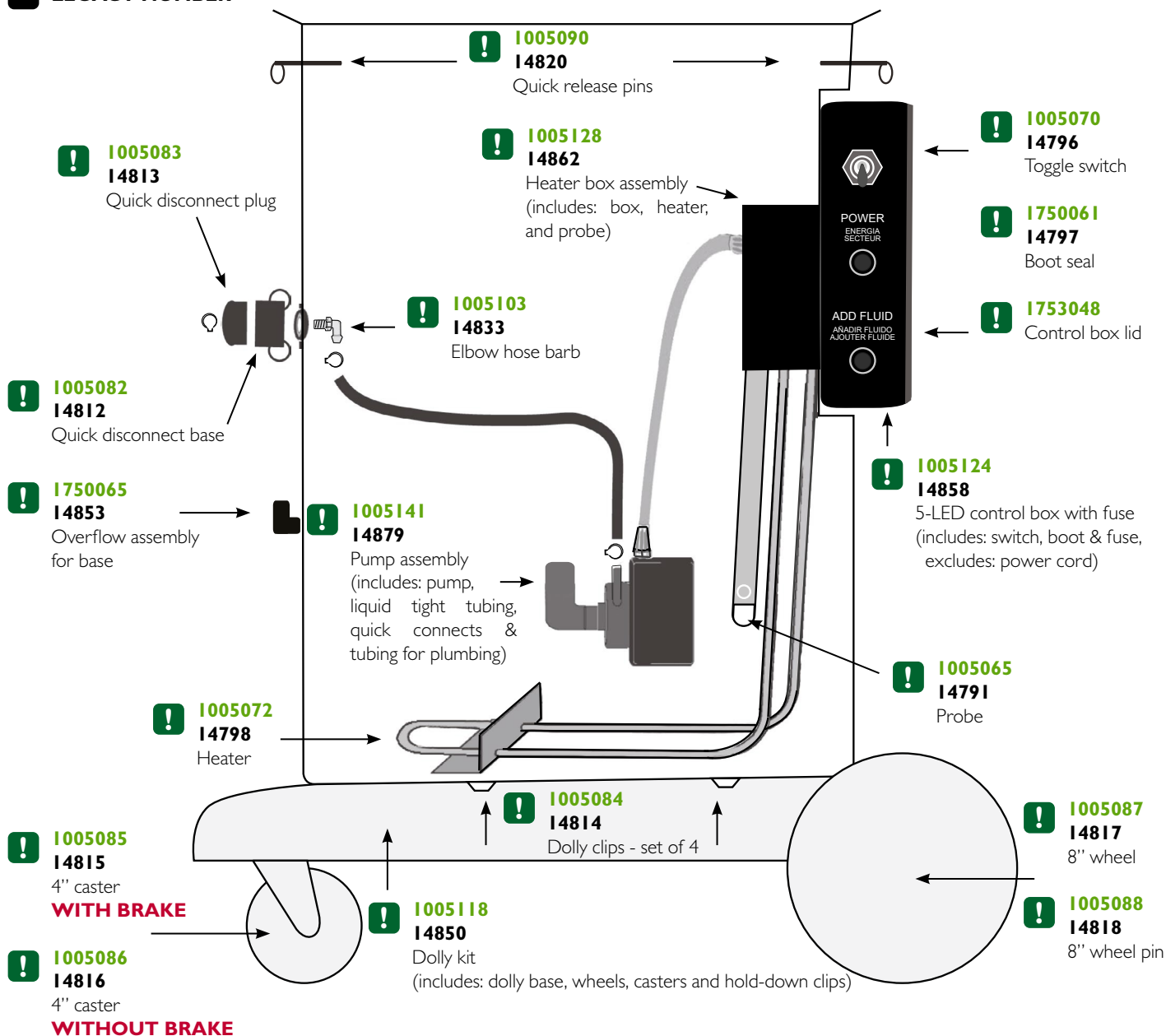


SmartWasher®
BIOREMEDIATING parts washing system



SW-23 MOBILE PARTS/BRAKE WASHER BASE DIAGRAM

- D3F0 NUMBER**
- LEGACY NUMBER**



ADDITIONAL PARTS FOR SW-23 MODEL:

- ! I750058 I4790**
Bulkhead fitting
- ! I750060 I4795**
Pump fuse
- ! I750059 I4794**
Heater fuse
- ! I750066 I4863**
Power cord kit 12ft (includes: cord & connectors)



Solutions to Keep You Moving™

800-556-5074 • crcindustries.com/smartwasher

CRC Industries, Inc. is a global leader in the production of specialty products and formulations for maintenance, repair and operational professionals and do-it-yourselfers serving the automotive, industrial, electrical, marine, heavy truck, hardware and aviation markets. CRC trademarked brands include: CRC®, Brakleen®, Evapo-Rust®, K&W®, Sta-Lube®, SmartWasher®, Manykate®, and Weld-Aid®

©2023 CRC Industries, Inc.



YouTube
SCAN HERE FOR
MORE INFO:



SCAN ME