



SmartWasher®
 BIOREMEDIATING parts washing system




SW-25 SIGNATURE PARTS WASHER

 **D3F0 NUMBER**

 **LEGACY NUMBER**




 **Base diagram** →

←  **Sink diagram**

1004852
14145



Solutions to Keep You Moving™

 • 800-556-5074 • crcindustries.com/smartwasher

CRC Industries, Inc. is a global leader in the production of specialty products and formulations for maintenance, repair and operational professionals and do-it-yourselfers serving the automotive, industrial, electrical, marine, heavy truck, hardware and aviation markets. CRC trademarked brands include: CRC®, Brakleen®, Evapo-Rust®, K&W®, Sta-Lube®, SmartWasher®, Manykate®, and Weld-Aid®

©2023 CRC Industries, Inc.

 **YouTube**
SCAN HERE FOR MORE INFO:



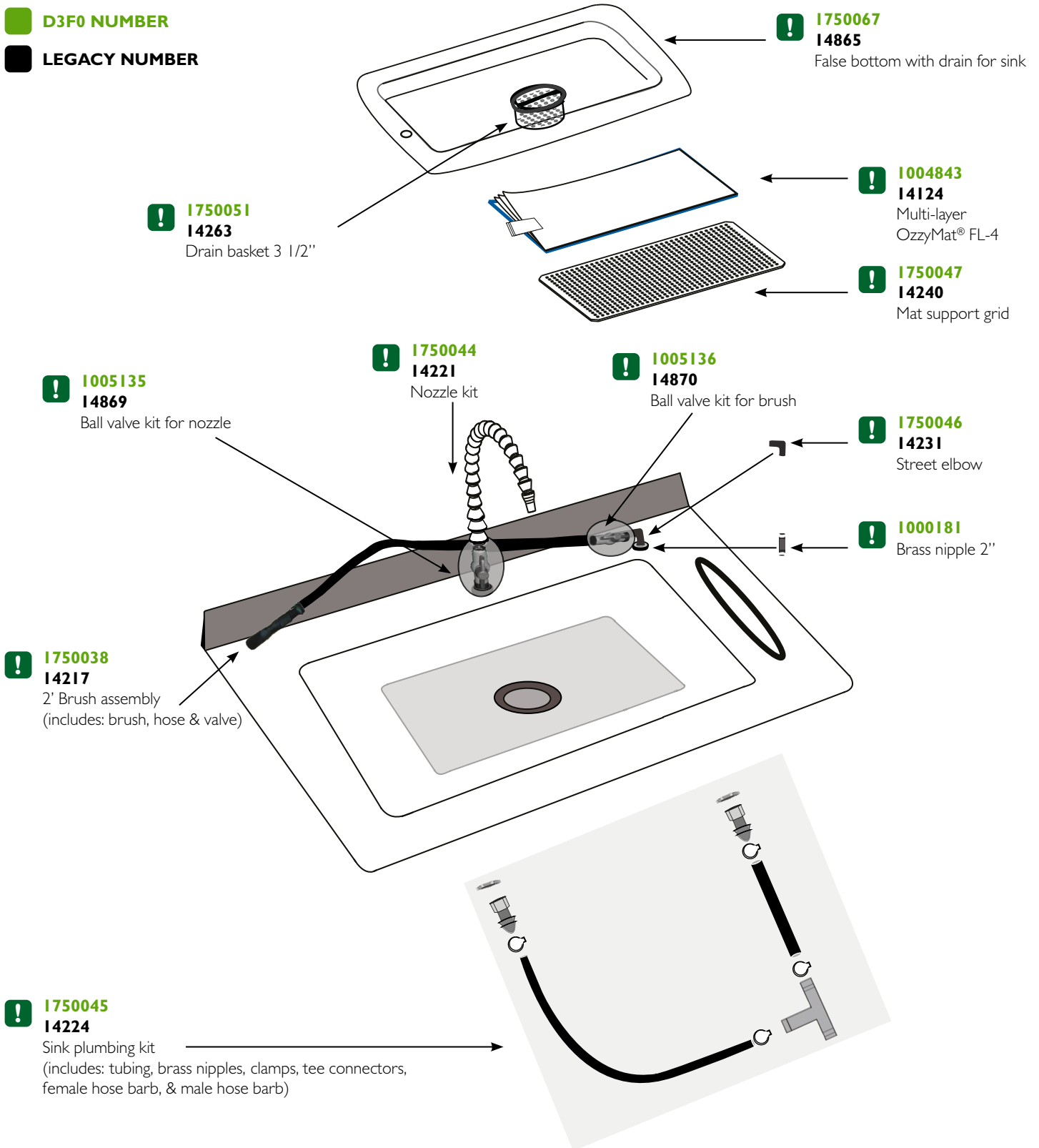
SCAN ME



SW-25 SIGNATURE PARTS WASHER SINK DIAGRAM

D3F0 NUMBER

LEGACY NUMBER



Solutions to Keep You Moving™

f t y o i n • 800-556-5074 • crcindustries.com/smartwasher

CRC Industries, Inc. is a global leader in the production of specialty products and formulations for maintenance, repair and operational professionals and do-it-yourselfers serving the automotive, industrial, electrical, marine, heavy truck, hardware and aviation markets. CRC trademarked brands include: CRC®, Brakleen®, Evapo-Rust®, K&W®, Sta-Lube®, SmartWasher®, Marykate®, and Weld-Aid®

©2023 CRC Industries, Inc.

YouTube
**SCAN HERE FOR
MORE INFO:**



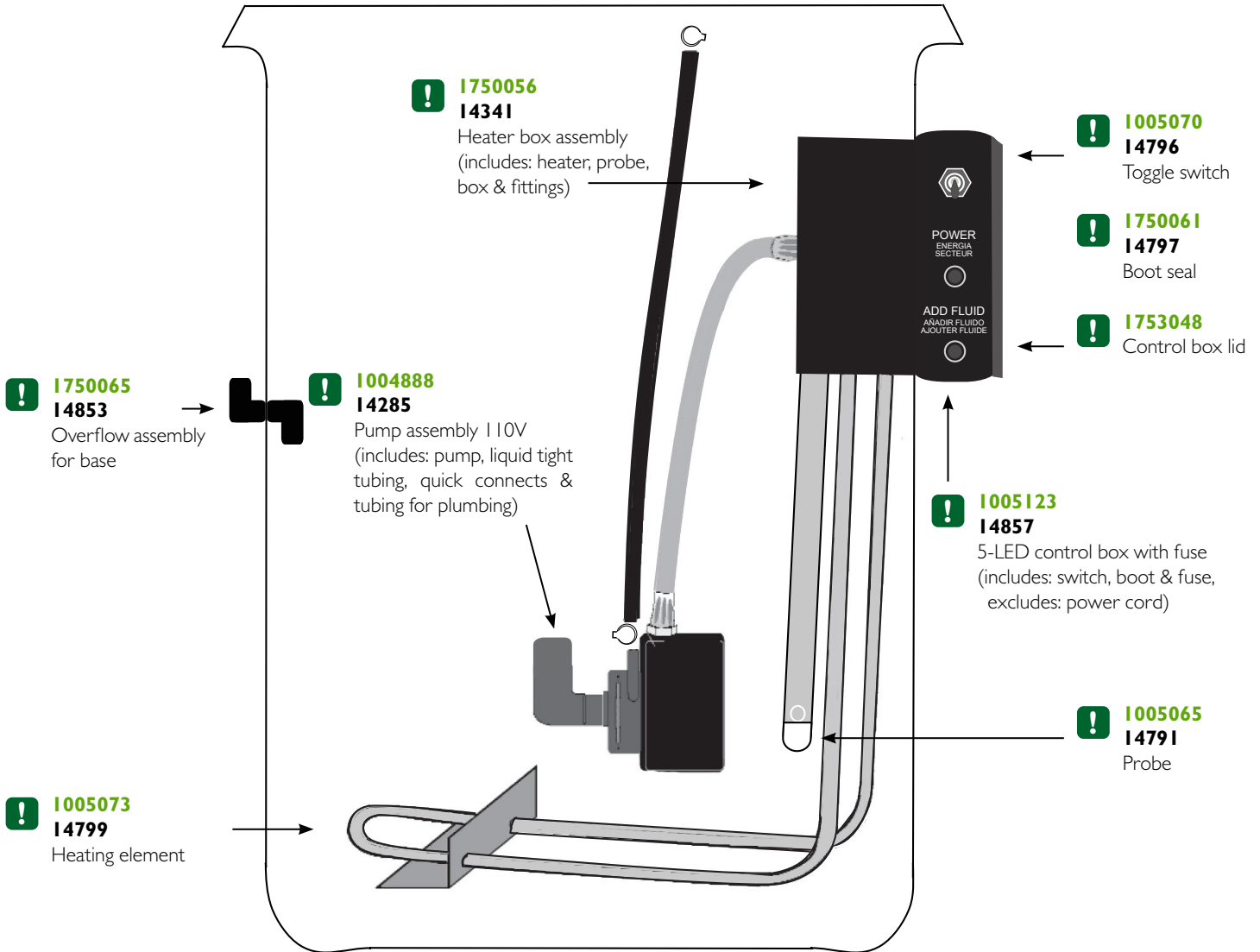
SCAN ME



SW-25 SIGNATURE PARTS WASHER BASE DIAGRAM

D3F0 NUMBER

LEGACY NUMBER



ADDITIONAL PARTS FOR SW-25 MODEL:

**! 1750058
14790**

Bulkhead fitting

**! 1750060
14795**

Pump fuse

**! 1750059
14794**

Heater fuse

**! 1750066
14863**

Power cord kit 12ft
(includes: cord & connectors)



Solutions to Keep You Moving™

f t i n • 800-556-5074 • crcindustries.com/smartwasher

CRC Industries, Inc. is a global leader in the production of specialty products and formulations for maintenance, repair and operational professionals and do-it-yourselfers serving the automotive, industrial, electrical, marine, heavy truck, hardware and aviation markets. CRC trademarked brands include: CRC®, Brakleen®, Evapo-Rust®, K&W®, Sta-Lube®, SmartWasher®, Marykate®, and Weld-Aid®

©2023 CRC Industries, Inc.

YouTube
SCAN HERE FOR
MORE INFO:



SCAN ME